

Decorative luminaire designed for lighting façades walls or passing areas. They are suitable to create light effects on those surfaces.

**Features**

Body built in aluminium with lenses to create up & down effect. Electronic gear built in the luminaire. Surface mounted installation.



**Power**

LED 1,7W

**Beam**

13°

**Colour temperature**

3000K warm white

**Nominal lumen output**

1,7W - 248 lm

**Control gear**

Electronic (EL)

**IP**

IP20 - IK10

**Finishes**

White

Black

Grey

**Supply voltage**

220...230V, 50/60Hz

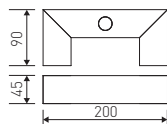
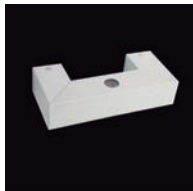
**Installation**

Wall

## Features



LED and control gear included



2x1,7W  
13°  
248 lm  
3000K **AGOKFL21-2**



2x1,7W  
13°  
248 lm  
3000K **AGOKFL21-222**



2x1,7W  
13°  
248 lm  
3000K **AGOKFL21-234**